



**SOUTH AUSTRALIAN WINE INDUSTRY  
ASSOCIATION INCORPORATED**

**Newsletter**

**22 December 2008**

[PDF Print version](#)

**FEATURE ARTICLES**

Long Service Leave Act – Changes are now law  
Fair Work Bill 2008 - The future of Industrial Relations in Australia  
Carbon Pollution Reduction Scheme details announced  
Climate Change – Important regional information sessions!  
H2O CO2 - Wine Industry Environment Conference – 23 & 24 September 2009  
South Australian success story

**EMPLOYEE RELATIONS & OHSW**

Employee complaints skyrocket  
Compulsory Education Age Act – Changes operative from 1 January 2009  
Rehabilitation & Return to Work Coordinators / Provisional Liability – Important changes  
Grape Harvest - break the cycle of overloading

**SUSTAINABILITY & WATER**

Water update – Allocations, carry-over water, pipelines and acidification  
Environmental updates  
Carbon capture wins support from Tarac Environment Future Fund  
Winegrape Water Monitor

**SUPPLY / DEMAND & INDUSTRY STATISTICS**

Wine industry supply and demand  
Australian Bureau of Statistics – 2008 Wine industry data released

**SALES MARKETING & PROMOTION**

International wine competition - Riesling du Monde  
Registration now open for Chardonnay du Monde 2009  
2009 National Restaurant Show in Chicago  
Vinexpo 2009 to host 50,000+  
IFE Poland – May 2009  
South Australian Government's European office – Helping the wine industry

**OTHER**

European deal improves trade access for Australian wines  
Dates for your diary

---

## Message from the Chief Executive

With the end of year fast approaching this will be the last edition of our newsletter for 2008.

This year has again proved to be a very busy period for SAWIA staff, responding to changes, informing members and advocating issues on behalf of the wine industry. I want to thank all staff for their continued enthusiasm in representing and supporting the wine industry. In 2009 we will continue to respond to the many challenges that are foreshadowed elsewhere in this newsletter.

As the new year dawns, it goes without saying that wine producers and grapegrowers will need to continue to tackle the many issues being faced, particularly as world financial markets remain uncertain and consumers exercise caution.



I want to take the opportunity to thank all of our members for their continued support and wish every one of our readers a very happy and safe Christmas and new year.

All staff will be taking a break over the Christmas / New Year period with the SAWIA office closed from 24 December 2008 and re-opening on 5 January 2009.

I look forward to catching up with you in the new year.

Merry Christmas!

A handwritten signature in cursive script that reads "Brian". The signature is written in black ink on a light yellow rectangular background.

Brian Smedley

---

## FEATURE ARTICLES

### Long Service Leave Act – Changes are now law

***NB: This article applies to all South Australian wine industry employers.***

The way in which unpaid leave is dealt with in the calculation of average weekly earnings has been amended by the *Long Service Leave (Unpaid Leave) Amendment Act* which takes effect on and from 1 January 2009. The change relates to workers who are employed on commission, an hourly basis or whose ordinary hours of work per week vary and consequently their rate of pay varies (primarily casuals and irregular part-time workers).

Until 31 December 2008, the Act requires the employer to determine an average of the number of hours worked per week for a period of three years prior to the date of taking the long service leave entitlement (irrespective of leave taken). In future, any periods of unpaid leave during the three year period will be disregarded so as to look back to an additional period that matches the unpaid leave period. This means that the average calculation will cover a period of three years of paid time worked.

These changes were initially reported in SAWIA's newsletter dated 25 November 2008. For more information, members can contact Sarah Hills (8222 9212 or [sarah@winesa.asn.au](mailto:sarah@winesa.asn.au)) or Egon Schwidder (8222 9273 or [egon@winesa.asn.au](mailto:egon@winesa.asn.au)).

---

## Fair Work Bill 2008 - The future of Industrial Relations in Australia

*NB: The following article applies only to constitutional corporations covered by the Federal Industrial Relations System (Workplace Relations Act 1996).*

The *Fair Work Bill 2008* was introduced to federal Parliament on 25 November 2008 by the Rudd Labor government. The Bill is a complete re-write of the current federal workplace relations legislation, completely replacing the *Workplace Relations Act 1996* - including the WorkChoices amendments.

These changes will have a profound impact on the future of industrial relations in Australia, with key elements of the new federal industrial relations system built on:

- § A strong safety net of 10 legislated National Employment Standards (NES) for all employees
- § A modern, simple award system that complements the NES, providing certainty, flexibility and stability for employers and their employees
- § Good Faith Bargaining, an enterprise-level collective bargaining system focused on promoting productivity
- § Unfair dismissal laws which balance the rights of employees to be protected from unfair dismissal, with the need for employers (particularly small business) to fairly and efficiently manage their workforce
- § Fair Work Australia, a "one-stop shop" for advice and support on all workplace relations issues and enforcement of legal entitlements.

The Government anticipates that the legislation will be passed by both houses of federal parliament by the end of March 2009. This will allow the Government to introduce some of its reforms including the establishment of Fair Work Australia, new unfair dismissal laws and enterprise bargaining rules from 1 July 2009. Most of the other changes are expected to be introduced from 1 January 2010.

To read more about what federal industrial relations will look like in 2009, refer to the News section of the Federal Industrial Relations page of SAWIA's [website](#).

For more information, members can contact Sarah Hills (8222 9212 or [sarah@winesa.asn.au](mailto:sarah@winesa.asn.au)) or Egon Schwidder (8222 9273 or [egon@winesa.asn.au](mailto:egon@winesa.asn.au)).

---

## Carbon Pollution Reduction Scheme details announced

The Government released its *Carbon Pollution Reduction Scheme (CPRS) White Paper* on 15 December, providing details of its medium target range for reducing carbon pollution. Australia will set an "unconditional" 2020 target of reducing greenhouse gas emissions of just 5 per cent if the world fails to act on climate change, but the Government has flagged deeper cuts of up to 15 per cent (on 2000 levels) by 2020 if international agreement can be reached to aggressively cut emissions around the world.

CPRS legislation will be debated during 2009 in both Houses of Federal Parliament, with a proposed starting date of 1 July 2010 and agricultural emissions to be included from 2015.

By way of background, in July 2008 the Federal Government released the *Carbon Pollution Reduction Scheme (CPRS) Green Paper*, outlining the Government's preferred positions on emissions trading. In October, the Government released *Australia's Low Pollution Future – The Economics of Climate Change Mitigation* setting out Treasury's detailed modelling of the costs to meet the challenge of climate change. The Government received and considered over 1000 submissions in the formulation of the White Paper.

SAWIA will circulate detailed information about the CPRS White Paper to members in the near future. In the interim, members can direct questions or comments to Brian Smedley on 8222 9277 or [brian@winesa.asn.au](mailto:brian@winesa.asn.au).

---

## Climate Change – Important regional information sessions!



Grapegrowers and winemakers can see first hand the direct impact of changing weather patterns and more extreme weather events on their businesses, however climate change is also driving consumers and retailers to place significant new demands on suppliers. For example, two of the largest retailers in the world have initiated carbon footprinting processes, meaning that suppliers will be required to measure and reduce their carbon footprint.

Wineries and grapegrowers are strongly encouraged to attend free regional information sessions, specifically for the wine industry, that will answer the following questions about climate change:

- § What are the key risks and opportunities for your business?
- § What demands are major international retailers making of suppliers?
- § How do your Australian customers feel about climate change?
- § What are the upcoming changes to Federal Government regulations, and what are the costs and other implications for your business?
- § What areas of your business produce a high proportion of greenhouse gas emissions?

To find out more about climate change, the Wine Industry Sector Agreement, and measuring and reporting your greenhouse gas emissions, register for a free regional Information Session: Barossa (14 January), McLaren Vale (21 January), Langhorne Creek (22 January), Adelaide Hills (28 January), Coonawarra (5 February) or Riverland & Clare (tba April). To register, click [here](#) and fax your completed form to 8222 9276.

These seminars are offered in accordance with the Wine Industry Sector Agreement, a 2 year project to inform the wine industry of issues surrounding climate change, while encouraging and assisting industry to measure and report their carbon footprint. The South Australian Wine Industry Association and the Wine Grape Council of South Australia signed the Sector Agreement with the State Government in accordance with the *Climate Change and Greenhouse Emissions Reduction Act 2007*.

For further information about the information sessions or sector agreement, please contact Jodie Pain (Project Manager) on 8222 9278 or [jodie@winesa.asn.au](mailto:jodie@winesa.asn.au).

---

## H2O CO2 - Wine Industry Environment Conference – 23 & 24 September 2009



*H2O CO2*, the 5th Australian Wine Industry Environment Conference, is being held in Adelaide on 23 September 2009 followed by an optional Technical Tour on 24 September 2009. Put these dates in your diary now!

Managing natural resources, reducing carbon emissions and climate change will be common themes throughout the conference, with a focus on helping the industry to address

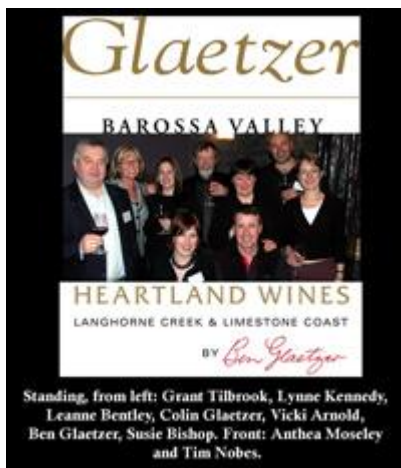
environmental challenges and compete successfully in the international marketplace.

Approximately 300 people attended the last conference in 2007, with strong representation from the wine industry, equipment and service providers, government, community and environmental groups.

To register your interest in attending the conference or being involved in sponsorship / exhibition, contact Marcia Burnett on 8222 9271 or [marcia@winesa.asn.au](mailto:marcia@winesa.asn.au). Regular updates will be provided, with detailed programs and registration available from March 2009.

---

### South Australian success story!



Heartland Wines (Langhorne Creek & Limestone Coast) and Glaetzer Wines (Barossa Valley) share more in common than just winemaker Ben Glaetzer. Sharing resources – sales/marketing, production and logistics - over six years has helped both companies establish distribution in 38 international markets. Australia, however, remains their largest single market.

Both wineries are proud to be part of the image of South Australian premium wine, and the regional characteristics of Langhorne Creek, Limestone Coast, and the Barossa Valley are strongly highlighted in promotional material.

Glaetzer Anaperenna 2006 was awarded the Trophy for Best Australian Red Blend over £10 at the Decanter World Wine Awards 2008, and has been named by Wine Australia as a "Landmark" wine.

Heartland Shiraz 2005 was awarded "Best South Australian Shiraz" at the International Wine & Spirit Competition 2007, and can be found flying high in Singapore Airlines Business Class lounges around the world.

Heartland Wines and Glaetzer Wines are just two examples of the tremendous success that South Australian wine producers and grapegrowers have achieved in Australia and around the world. SAWIA would love to hear your success story too! SAWIA members are encouraged to send us 150 (or so) words, with stories featured regularly in the association's newsletter.

Be proud of what South Australians have achieved! Send your article to [craig@winesa.asn.au](mailto:craig@winesa.asn.au), or phone Craig MacDonald on 8222 9272 for more information.

---

## EMPLOYEE RELATIONS & OHSW

### Employee complaints skyrocket

***NB: The following article applies only to constitutional corporations covered by the Federal Industrial Relations System (Workplace Relations Act 1996).***

Breaches of the *Workplace Relations Act 1996* by South Australian employers have skyrocketed during the last financial year according to the federal Workplace Ombudsman's annual report. This follows on from the report in SAWIA's 25 November that WA vineyards and wineries were being randomly audited by the Workplace Ombudsman ahead of the 2009 vintage.

Breaches in South Australia increased from 235 in 2006-07 to 1,138 in 2007-08. South Australian employers were required to make good the underpayment of over \$2 million dollars of

wages in 2007-08, almost triple the previous year! The majority of breaches were related to the café and restaurants, security, road freight transport, hotels and cleaning industries.

Employers in the wine industry are reminded that the employer has an obligation to ensure that employees who are covered by an award or NAPSA must be paid in accordance with all applicable award / NAPSA (Notional Agreement Preserving a State Award) conditions such as rates of pay (including casual rates and minimum rates), penalty and overtime rates, loadings for shift work, allowances and meal breaks.

The Workplace Ombudsman now conducts one compliance audit for every 5 complaints it investigates. When passed by federal Parliament, the *Fair Work Bill 2008* will introduce changes in the roles of workplace inspectors giving them enhanced powers. Fair Work Inspectors will have powers to enter an employee's premises to monitor compliance and bring court proceedings to enforce conditions relating to matters covered by the National Employment Standards (NES) or a modern award.

SAWIA members are encouraged to contact us if you have any questions or concerns about obligations regarding payment of wages and / or penalty provisions. Don't wait for a Workplace Inspector to call by to check compliance with your legal requirements! Members should contact Sarah Hills (8222 9212 or [sarah@winesa.asn.au](mailto:sarah@winesa.asn.au)) or Egon Schwidder (8222 9273 or [egon@winesa.asn.au](mailto:egon@winesa.asn.au)).

---

#### Compulsory Education Age Act – Legislative changes operative from 1 January 2009

***NB: This article applies to all South Australian wine industry employers.***

New government legislation (*The Compulsory Education Age Act*) requires that, from 1 January 2009, young people are required to be in full-time education or training until they turn 17 or gain a qualification. The exception to this is if a young person obtains a job offer for at least 25 hours per week, which would then make the young person exempt from education or training – provided they have also received authorisation from the Department of Education and Children's Services.

Follow the specific procedures set out in a Notice to Members available from the Noticeboard of the Employee Relations page of SAWIA's [website](#) to obtain this authorisation:

- § When already employing a young person who is 16 years of age and works for a total of 25 hours or more per week for you (or you plus another employer)
- § Before offering a young person who is 16 years of age a job that is 25 hours or more per week.

It is important to note that, if a young person aged 16 is undertaking full-time education or training, that person is still eligible to work less than 25 hours per week without an exemption.

For more information, members should refer to the Notice to Members, or contact Sarah Hills (8222 9212 or [sarah@winesa.asn.au](mailto:sarah@winesa.asn.au)) or Egon Schwidder (8222 9273 or [egon@winesa.asn.au](mailto:egon@winesa.asn.au)).

---

#### Rehabilitation & Return to Work Coordinators / Provisional Liability – Important changes

SAWIA has previously advised members of a number of changes being implemented to the workers compensation scheme in South Australia. From 1 January 2009 two significant legislative changes will become operative:

## **Appointment of a Rehabilitation and Return to Work Coordinator**

Wine industry employers with 30+ employees for more than 3 successive months in a calendar year or having annual remuneration greater than \$1.6M will be required to appoint a Rehabilitation and Return to Work Coordinator (RRTWC). The RRTC appointment must be made by 30 June 2009, and the RRTC enrolled to attend a prescribed training course by 31 December 2009.

Members may have also recently received a letter from WorkCover about the required appointment and listing approved training organisations. It is important to note that there are two levels of training, and which one your RRTWC must attend will depend on the industry's levy rate and your businesses claims history.

Following the end of the 2009 vintage, the South Australia Wine Industry Association will be conducting a series of regional forums to help members identify and appoint a Rehabilitation and Return to Work Coordinator. The forums will also promote networking and mentoring opportunities for RRTWC's in the wine industry. Members will soon receive a Notice from the Association setting out further details of these forums.

## **Provisional Liability**

Provisional liability, a process in which WorkCover begins paying income and medical costs for a new claim within 7 days rather than waiting for the claim to be determined, takes effect on 1 January 2009.

Provisional liability has been introduced because the delays and disputes around determining a claim (whether it be accepted or not) can set back the rehabilitation and return to work of an injured worker whose claim is often ultimately accepted. The longer these delays, the more difficult it becomes for a worker to ultimately return to work.

Where it is clear that a workplace injury has occurred, employers should encourage the employee to complete the claim form and have the claim determined by Employers Mutual Limited (as opposed to the employee making a claim for provisional liability).

Any members with any queries or concerns about Workers Compensation are encouraged to contact SAWIA and speak with Sarah Hills (8222 9212 or [sarah@winesa.asn.au](mailto:sarah@winesa.asn.au)) or Egon Schwidder (8222 9273 or [egon@winesa.asn.au](mailto:egon@winesa.asn.au)).

---

## **Grape Harvest - break the cycle of overloading**

This year's grape harvest is about to begin, and the Department for Transport, Energy and Infrastructure (DTEI) is reminding industry to ensure all loads of grapes are within the specified load range and secured for transportation as overloaded vehicles and spillage of grapes is a risk to all road users.

Transport Safety Compliance Officers from DTEI are available to speak with industry representative groups, individual companies and drivers about how to comply with road laws during the harvest period, and to help them understand their responsibilities under the compliance and enforcement legislation.

For those who operate grape harvesters, permits are required for travel on our roads, which have conditions to assist in ensuring safety for both the operators and other road users.

Wineries, grape growers, drivers and operators are also reminded that authorised officers have expanded powers to obtain records from wineries of the loads they have received.

Grapegrowers and transport operators are urged to work together to ensure they meet their mass limits and have an incident free harvest season.

For information on:

- § **Driver fatigue laws** contact DTEI on 1300 784 344 or [dtei.driverfatigue@saugov.sa.gov.au](mailto:dtei.driverfatigue@saugov.sa.gov.au)
- § **Compliance and enforcement** contact DTEI on 1300 799 955 or [compliance&enforcement@saugov.sa.gov.au](mailto:compliance&enforcement@saugov.sa.gov.au)
- § **Transport Safety Compliance Officers** or for advice phone 8260 0220.

---

## SUSTAINABILITY & WATER

### Latest Water update – Allocations, carry-over water, pipelines and acidification

River Murray irrigation allocations will remain unchanged at 15% from 1 January 2009, according to the latest River Murray Water Resources Report (19 December). The volume of water in upstream storages is currently 2,214 GL (24% capacity), compared to 19% capacity at the same time last year.

On 10 December 2008, Karlene Maywald (Minister for the River Murray) announced two projects that would be presented to State Parliament's Public Works Committee that day:

- § A project to supply irrigation water from the River Murray at Jervois to Langhorne Creek and Currency Creek, the second component of the **Lower Lakes Integrated Pipelines Project** to secure quality water supply to the townships, communities and irrigators drawing water from the Lower Lakes
- § \$14 million in **proposed site access works for the temporary weir** below Wellington, including construction of access routes, design and geotechnical work, contractor engagement and provision for landowner settlement - although the Minister emphasised "...this does not mean a final decision on the weir has been made."

The Minister had earlier announced that the State Government applied to the Commonwealth Government for advance approvals as part of the \$10 million **management strategy to avoid acidification** in the Lower Lakes. The strategy outlines acidification triggers for alkalinity and water levels at the Lower Lakes, which would determine if action needed to be taken to allow seawater into the Lakes to manage the acidification risk. The triggers are the detection of calcium carbonate levels at 25 milligrams per litre, or if water levels reach 1.5 metres below sea level in Lake Alexandrina or 0.5m below sea level in Lake Albert.

On 1 December, the Minister advised that **water not used in 2008/09 will be eligible for carry-over to 2009/10**. While the 2009/10 water carry-over scheme has not yet been finalised, it is likely to be similar to the 2008/09 scheme. In 2007/08, more than 700 irrigators carried over 98.5 gigalitres of water for use in 2008/09.

For more information on the above announcements, refer to the Resources section of the Drought page of SAWIA's [website](#).

---

### Environmental updates

**FINLAYSONS**

Finlaysons (SAWIA Wine Industry Partner) has provided an update on a number of environmental matters of importance to the South Australian wine industry:

#### **Site contamination amendments to the Environment Protection Act 1993 (SA)**

South Australia's new site contamination legislation is still on its way. The Environment Protection

Authority (EPA) has advised that commencement of the new laws, which will give the EPA powers to order the assessment and clean-up of historical contamination, is likely to occur in mid-2009. This start date has been delayed slightly from the originally proposed February 2009 commencement, to allow for site contamination auditors to be accredited prior to the new EPA powers coming into effect.

### **Environment Protection (Water Quality) Policy (SA)**

The EPA has undertaken a review of the *Environment Protection (Water Quality) Policy 2003* and has developed a discussion paper for public comment available [here](#). The discussion paper proposes a number of amendments to the Policy including:

- § Replacing certain offences (for causing water quality criteria to be exceeded, for discharge of pollutants into waters and discharge of pollutants or wastes into bores) with general duties to keep discharges as low as is reasonably practicable (which is consistent with requirements in other States)
- § Tightening the applicable water quality criteria
- § Changing the way in which wastewater lagoons are dealt with.

Public submissions can be made until 27 February 2009.

### **Draft Environment Protection (Waste to Resources) Policy (SA)**

The EPA is seeking comments on a *Draft Environment Protection (Waste to Resources) Policy*. This new policy will replace and supersede the *Environment Protection (Waste Management) Policy 1994*. Comments must be submitted by 20 February 2009. The draft policy:

- § Requires application of the waste management hierarchy by the EPA
- § Prohibits unlawful disposal or stockpiling of waste
- § Provides standards for waste transporters (licensed or unlicensed).

For further information regarding any of these matters, please contact Suzanne Dickey (8235 7813 or [suzanne.dickey@finlaysons.com.au](mailto:suzanne.dickey@finlaysons.com.au)) or Kyra Reznikov (8235 7561 or [kyra.reznikov@finlaysons.com.au](mailto:kyra.reznikov@finlaysons.com.au)) at Finlaysons.

---

### **Carbon capture wins support from Tarac Environment Future Fund**



A project conceived by South Australian environmental advocate *Greenlime*, to capture and re-use carbon dioxide produced as a result of the wine making process, is the successful recipient of the \$20,000 Tarac Environment Future Fund award for 2008.

*Greenlime*, in collaboration with SAWIA member d'Arenberg Wines and Adelaide based wine industry consultant *Provisor*, will utilise the \$20,000 grant to assist in the development of Global Best Practice carbon dioxide capture from wine fermentations and its purification to Food Grade Standard.

The project's outcomes will benefit both wineries and the environment in general. By capturing and recycling carbon dioxide from fermentations, wineries can add value to a winery waste product, and at the same time mitigate Climate Change by reducing emissions of the primary Greenhouse Gas. By recycling the carbon dioxide that they emit, wineries can reduce purchases from 'mines' where the carbon dioxide should be left, safely sequestered underground.

The project has added significance because this area of winemaking has been poorly researched with limited information available on the quantity of carbon dioxide generated, an important input into the carbon footprint calculator developed for the industry. The outcomes of the project are expected to be available in mid to late 2009.

For further information regarding the Tarac Environment Future Fund contact Dr Ira Pant on 8562 1522 or [irap@tarac.com.au](mailto:irap@tarac.com.au).

---

### Winegrape Water Monitor

The Australian Wine and Brandy Corporation (AWBC) is producing a free monthly report on the key water variables that impact on the size of Australia's winegrape crop - rainfall, system inflows, water storage levels, water allocations and future rainfall prospects - available from the AWBC's Winefacts [website](#) under the *Grapegrowing* category.

The November report highlighted that water allocations improved in Victoria but were unchanged in South Australia and New South Wales, while poor October rains reduced prospects of further improvement.

Monthly releases are scheduled for release on the 15th of each month. For more information, email the AWBC on [info@wineaustralia.com](mailto:info@wineaustralia.com).

---

## SUPPLY / DEMAND & INDUSTRY STATISTICS

### Wine industry supply and demand

The Australian Wine and Brandy Corporation's annual wine industry supply and demand assessment, including a report and presentation made at the 2008 Wine Industry Outlook Conference, is available from the Winefacts [website](#) under *Strategies and Forecasts*.

The report notes that massive uncertainty in both supply and demand made the assessment difficult for 2008/09 and beyond. According to the report, survival through the current conditions will require ongoing pursuit of quality and cost savings. However, the future requires the Australian wine sector to "...continue the work of positioning itself for value-building, by defining and conveying the story of Australia's distinctive wine characteristics and encouraging greater participation in the regionally distinct and fine wine market." The report concludes that the case for downsizing the industry is becoming more and more compelling.

While the Outlook Conference concluded that urgent rationalisation and downsizing is required, there was little consensus about from where and whom the adjustments should come.

---

### Australian Bureau of Statistics – 2008 wine industry data released

The Australian Bureau of Statistics has released the annual summary of statistics on Australia's grape and wine production and related activities for 2008. *Australian Wine and Grape Industry, ABS Cat. 1329.0* is a valuable source of information about domestic consumption, exports, imports, area of vines, plantings and losses by variety, grape production and yield.

The 2008 ABS publication highlighted that the grape crush increased 31.1% to 1.8 million tonnes from the previous year, with the area of grape bearing vines rising 1.4% to 166 thousand hectares. Exports fell 9.2% to 715 million litres, and domestic sales of Australian wine dropped 4.8% to 426 million litres.

The publication is available free of charge from the ABS [website](#).

---

## SALES MARKETING & PROMOTION

### International wine competition - Riesling du Monde



The 12th annual "Riesling du Monde" (Riesling of the World) competition is scheduled for 26 January 2009 in Strasbourg (France). In 2008, 514 samples coming from 13 countries were presented to 230 international jury members (wine servers, oenologists, wine producers, restaurant owners, wine merchants, certified wine tasters, specialized journalists). Nine 'Trophies of Excellence', 124 Gold medals and 19 Silver medals were awarded.

Trophy winners will be presented as a guest at the EGAST trade fair (a trade fair for equipment, gastronomy, food services professionals and tourism) at the Exhibition Center in Strasbourg, France, from 14 to 17 March 2010.

The deadline for entry is 7 January 2009. For more information click [here](#), or contact Christine Collins on +33 3 88 37 21 23 or [ccollins@strasbourg-events.com](mailto:ccollins@strasbourg-events.com).

---

### Registration now open for Chardonnay du Monde 2009

Chardonnay du Monde 2009 will take place from 11-14 March 2009 in Burgundy (France), with registrations welcome until 4 February 2009. The international competition recognises the world's best Chardonnay wines, with more than 900 entries expected from over 37 countries.

To register, or obtain more information, click [here](#) or email [infos@chardonnay-du-monde.com](mailto:infos@chardonnay-du-monde.com).

---

### 2009 National Restaurant Show in Chicago

Austrade is inviting wineries to connect with restaurant and hospitality buyers at the 2009 National Restaurant Association Show (16-19 May 2009) in Chicago. Wineries are invited to join the annual Australian National Pavilion, showcasing the best and most promising Australian foodservice products available for export into the USA food service market.

Austrade has advised this show is only suitable for wine companies with distribution already in place in the USA.

To obtain more information, including costs, download the event brochure [here](#). Any questions should be directed to Renee Barton of Austrade on 8202 7829.

---

### Vinexpo 2009 to host 50,000+

Vinexpo 2009 in France (21 – 25 June) will have a total booth area of more than 430,000 sq. ft. In 2007, Vinexpo hosted 2,400 exhibitors from 45 countries and 50,443 professional visitors from 140 countries.

For more information about exhibiting or attending Vinexpo 2009 visit [www.vinexpo.com](http://www.vinexpo.com).

---

## IFE Poland – May 2009

IFE Poland is Poland's leading food and drink exhibition, and a "jumping off point" into the Central and Eastern European markets that surround it. The IFE (International Food Drink & Hospitality Exhibition) operates a strict B2B (Business-to-Business) visitor policy, and is scheduled for 20-22 May 2009 in Warsaw.

IFE Poland 2008 attracted 4,000 trade visitors and 278 exhibitors, with a significant proportion of visitors having direct purchasing authority.

The *Central and Eastern European Wine Challenge* is being staged this year at the show. For more information, refer to the Resources section of the Export Events page of SAWIA's [website](#), visit the IFE [website](#) or contact Charlie Ludlow on +44 (0)20 7886 3147 or [Charlie.Ludlow@montex.co.uk](mailto:Charlie.Ludlow@montex.co.uk).

---

## South Australian Government's European office – Helping the wine industry

The Government of South Australia maintains an office in London, headed by Bill Muirhead (Agent-General for South Australia), which works in partnership with business, industry and other stakeholders to maximise the opportunities and benefits of sustainable South Australian economic, social and cultural growth.

The Office of the Agent General has a dedicated Wine Portfolio managed by Jennifer Allport, which supports the UK and Russian markets. The 2008/09 objectives for the Wine Portfolio include:

- § Promoting and raising public/consumer awareness of South Australian brands
- § Building relationships with key media and trade
- § Supporting South Australian companies to enter or grow markets.

These objectives complement the direction of key wine industry bodies and look to add value to current in-market programs. By way of example, the Wine Portfolio recently helped facilitate a contract for a South Australian wine company with a major Russian importer, resulting in the importer taking almost all of the portfolio at varying price points. The Wine Portfolio also assisted two Russian journalists to visit South Australia, providing South Australian businesses with the opportunity for one to one contact with the journalists.

Services are generally provided at no cost, except for provision of wines, transport and other relevant costs - although this depends on the nature of the actual service provided. To obtain more information or seek assistance, contact Jen Allport on +44(0)207 520 9102 or [Jennifer.allport@south-aus.eu](mailto:Jennifer.allport@south-aus.eu).

---

## OTHER

### European deal improves trade access for Australian wines

Australia has welcomed a new wine agreement, as a significant step towards facilitating trade in wine between Australia and Europe.

The agreement brings a number of important benefits to the Australian wine industry, including:

- § European recognition of an additional 16 Australian winemaking techniques, including the use of oak chips to add flavour
- § Simpler arrangements for the approval of winemaking techniques that may be developed

in the future

- § Simplified labelling requirements for Australian wine sold in European markets, to allow optional information such as the number of standard drinks
- § Protection within Europe for Australia's 112 registered geographical indicators
- § Australia can continue to use a number of traditional expressions (e.g., vintage, tawny and ruby).

The Agreement provides a timetable for the phasing out of Australian usage of the final tranche of European geographical indications (Sherry, Port etc.). Australia has also agreed to cease using a range of European traditional expressions except where they are included in pre-existing trademarks and business names or used in translation.

For further information, click [here](#).

---

## Dates for your diary

### 2009

- § 14 Jan, [Climate Change Seminar](#), Barossa
- § 15-17 Jan, [IFOWS - India International Food & Wine Show](#), India
- § 21 Jan, [Climate Change Seminar](#), McLaren Vale
- § 22 Jan, [Climate Change Seminar](#), Langhorne Creek
- § 25 January, Adelaide Hills Crush 09
- § 26-28 Jan, [Millésime Bio 2009](#), France
- § 27-30 Jan, [Unified Wine & Grape Symposium](#), USA
- § 28 Jan, [Climate Change Seminar](#), Adelaide Hills
- § 5 Feb, [Climate Change Seminar](#), Coonawarra
- § 3-6 March, [Foodex](#), Tokyo
- § 3-4 March, [Outlook'09 A Changing Climate for Agriculture](#), Canberra
- § 12-15 March, [Taste of Sydney](#)
- § 29-31 March, [Prowein](#), Dusseldorf Germany
- § tba April, [Climate Change Seminar](#), Riverland & Clare
- § 2-6 April, [VinItaly](#), Verona Italy
- § 11-19 April, [Barossa Vintage Festival](#)
- § 6-9 May, [HOFEX](#), Hong Kong
- § 12-14 May, [London International Wine and Spirit Fair](#), London
- § 13-16 May, [Seoul Food & Hotel 2009](#), Korea
- § 16-19 May, [National Restaurant Association Show](#), Chicago
- § 20-22 May, [IFE Poland](#), Warsaw
- § 21-25 June, [Vinexpo](#), Bordeaux (France)
- § 3-5 July 2009, [China Int'l Alcoholic Drinks Expo](#), Beijing
- § 20-23 August 2009, [Taste of Melbourne](#)
- § 23-24 September, Wine Industry Environment Conference, Adelaide

### 2010

- § 3-8 July 2010, [WineTech 2010](#), Adelaide
-

## Industry Partners

FINLAYSONS



[www.finlaysons.com.au](http://www.finlaysons.com.au)

[www.hostplus.com.au](http://www.hostplus.com.au)



<http://www.mga.com/>

[www.nci.com.au](http://www.nci.com.au)



Bell | FOREIGN EXCHANGE

[www.wcdcomp.com](http://www.wcdcomp.com)

[www.bellfx.com.au](http://www.bellfx.com.au)

**FLIGHT CENTRE**  
*Unbeatable*

[www.flightcentre.com.au](http://www.flightcentre.com.au)

## Sponsors



[Image Brand & Colour](#)

[Employers Mutual](#)

[Export Assist](#)