



Why?

Consumers:
Your Storey

Wineries:
Supplier Contracts

Retailers: Tesco, Walmart, Coles, Metcash etc.

International Reputation: South Africa, NZ, California and now France & Chile



entwine australia www.wfa.org.au/entwineaustralia




+




=



entwine australia www.wfa.org.au/entwineaustralia

Entwine Members

1. Annual Survey
- resource use indicators
2. EMS certification
- approved schemes
3. Carbon footprint
- winery only



entwine australia www.wfa.org.au/entwineaustralia

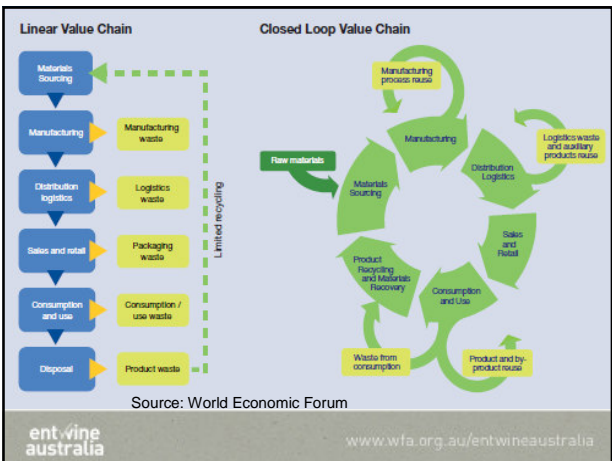
Annual Entwine Survey

- Measurement of performance is a first vital step on the journey towards sustainability
- Financial Opportunities through efficiency and re-use

Key Areas:

- Water Use and Waste Water Produced
- Fertiliser and Spray Application
- Energy Use: Electricity and Fuels
- Waste Recycling

entwine australia www.wfa.org.au/entwineaustralia



EMS Certification

- Holistic Approach to NRM issues, accountability, risk avoidance and continuous improvement

Approved Certifications

- **Freshcare Environmental**
Customised for Aus viticulture and wineries
- **ISO 14001**
International Standard in EMS
- Other certification schemes considered



Carbon Footprint

- We need to be aware and prepared
- Marketing opportunities
- The Australian Wine Carbon Calculator (AWCC)
www.wfa.org.au/entwineaustralia
- Excellent and easy to use starting point

Entwine - The Story So Far

Companies currently committed to EntWine Australia include:

- Foster's
- Orlando
- Casella
- De Bortoli
- Lion Nathan
- Yalumba
- Taylors
- McWilliams
- Others

Current industry involvement **~50%** of the total crush

EntWine Australia Benefits

supporting you to:

- Prepare for future challenges on resource use and pollution
- Improve your corporate image and relations with public authorities and the local community
- Improve use, selection and recycling of resources to improve your bottom line
- Reduce the risk of remediation, clean-up, fines and brand damage from accidents
- Improve the environmental health of your site
- Retain and Enter new markets that value sustainability

Environmentally Friendly Wine



more information?

www.wfa.org.au/entwineaustralia

Thank You

