

The Wine Industry Approach

Evan Hiscock



1

The Wine Industry Approach

- Recent history
- WINEC and its work
- Industry responses
- Conclusion..



2

Recent history

Strategy 2025 - June 1996.

Sustaining Success – 2002.

Oiling the Chain - March 2007.

Directions to 2025 - May 2007..



3

WINEC

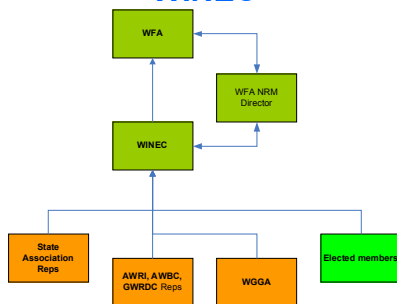


- Provide national wine Industry leadership for environmental sustainability matters by recommending Policy and strategic direction to the WFA.

- Set up in April 2002..

4

WINEC



5

Directions to 2025

- A. Identify opportunities - determine activities that are a major contributor to the wine sector's environmental footprint
- B. Environmental performance – develop and implement systems based approaches to minimise environmental footprint identified by life cycle analysis (i) AWIS (ii) NPC (iii) other initiatives
- C. Performance measures
- D. Feedback
- E. Key policy initiatives (i) water (ii) biodiversity (iii) climate change
- F. Demonstrate credentials..

WINE AUSTRALIA DIRECTIONS TO 2025

6

Directions to 2025 (i)

E. Key policy initiatives - Ensure the Australian wine sector takes a leadership position across key policy areas, including:

- 1. **Water** - Ensure that the Australian wine sector has equitable access to water within a system that acknowledges the need for sustainable environmental flows. Continue to promote uptake of more efficient water use technology and practices throughout the wine sector.
- 2. **Biodiversity** - Ensure widespread commitment to the management of biodiversity.
- 3. **Climate change** - Ensure a research program is resourced and conducted as a matter of priority.

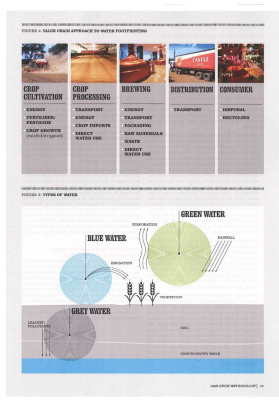


7

National Water Policy (2004)

- That water access entitlements be more clearly specified
- That water access entitlements be perpetual
- That water access entitlements be separated from land title
- That constraints on water trade within and between regions and states be minimised
- That where governments require water for environmental or other purposes they acquire it on the open market and pay fair market rates for it and
- That before any changes to the way that water is managed are made that appropriate consideration be given to the environmental and social impacts at the regional level..

8



9

Biodiversity Policy (2008)

- The Winemakers' Federation of Australia recognises the value of biodiversity in maintaining productivity and ecosystem health.
- WFA acknowledges that biodiversity is relevant at many scales - from soil fauna and flora, through to groundcover species on the vineyard floor and stands of native vegetation providing valuable habitat in the productive agricultural landscape.
- Vineyards have historically been established on land already modified for agricultural production, such as grazing, cropping and dairy. Although the wine industry has not been directly responsible for the clearing of large tracts of native vegetation, the industry does accept a role in reinstating areas of native habitat in the landscape.
- WFA recognises that biodiversity can be reinstated by activities including the use of native groundcover species on the vineyard floor, financial and in-kind investment in the establishment of regional vegetation corridors, and the protection of healthy natural waterways.

10

Climate Change Policy (2007)

- Minimise emissions of greenhouse gases across all stages of production
- Recognise that large changes to the greenhouse gas contributions of the Australian wine industry are likely to have little impact on climate change
- Develop methods to more accurately assess the extent to which climate change would impact on wine grape production at a regional level
- Develop methods to enable the Australian wine industry to accommodate expected climate change
- Encourage all tiers of government to adopt a consistent approach to greenhouse gas and climate change including adaptation strategies
- Encourage Australian governments to use a broad range of mechanisms (from regulatory to market mechanisms) to manage climate change/ greenhouse gas contributions eg pricing, tradable quotas, offsets
- Encourage Australian governments to subject all climate change / greenhouse gas policies to rigorous economic assessment to determine the impact on regional, state and national economies

11

Directions to 2025 (ii)

B. Environmental performance - Continue to develop and implement systems-based approaches to minimise the sector's environmental footprint as identified in the life cycle analysis such as:

- The Australian Wine Industry Stewardship program
- The National Packaging Covenant Mentor program
- Other national, state and regional initiatives

C. Performance measures - Identify headline criteria against which the Australian wine sector's performance in managing its environmental impact can be measured and compared to competing sectors.

F. Demonstrate credentials - Illustrate the sector's environmental credentials through effective communication of the sector's programs and performance..



Industry tools - Son of AWIS



13

Directions to 2025 (iii)

A. Identify opportunities - Undertake a lifecycle analysis of Australian wine to determine the activities that are the major contributor to the wine sector's environmental footprint.

B. Environmental performance - Continue to develop and implement systems-based approaches to minimise the sector's environmental footprint as identified in the life cycle analysis such as:

- The Australian Wine Industry Stewardship program
- The National Packaging Covenant Mentor program
- Other national, state and regional initiatives

C. Performance measures - Identify headline criteria against which the Australian wine sector's performance in managing its environmental impact can be measured and compared to competing sectors..



Industry tools - AWCC 1.2

GHG Emissions Summary		Percent GHG
Scope 1	Mobile Fuels - Quantity Based	0
	Mobile Fuels - Distance Based	0
	Stationary Fuel Combustion	0
	Fugitive Emissions	0
	Manufacturing Processes	0
	Process Emissions	0
	Landfills	0
	Leakage	0
	Scope 2	0
	Scope 3	0
Scope 2	Transportation and Distribution Emissions	0
	Power and Energy Use, Manufacturing and Transport	0
	Business and Consumer	0
	Landfills	0
	Chemicals	0
	Manufacturing Processes	0
	Process Emissions	0
	Landfills	0
	Leakage	0
	Scope 3 Breakdown	0
Scope 3 Breakdown	Mobile Fuels - Quantity Based	0
	Mobile Fuels - Distance Based	0
	Stationary Fuel Combustion	0
	Fugitive Emissions	0
	Manufacturing Processes	0
	Process Emissions	0
	Landfills	0
	Leakage	0
	Scope 2	0
	Scope 3	0

15

CPRS

- “The science informs the global policy makers who decide to ..
- .. use a market based mechanism that ..
- .. creates a “price” for emissions of carbon dioxide and this ..
- .. creates impacts right throughout the supply chain..” KPMG

16

Copenhagen



<http://www.timeforclimatejustice.org/>

17

The issues - the 2007 topics

- Biodiversity
- Carbon accounting and trading
- Effect of Climate Change on grapegrowing
- Reuse of winery wastewater
- Water from the Murray-Darling System
- What are our competitors doing?

18

The Issues - now

- the emergence of the CPRS as a means of trying to turn the battleship and the effect it will have on the whole supply chain and consumer behaviour
- water supply
- increasingly strident demands from some customers (and consumers) for evidence of environmental sustainability.
- the variability of longer term climate
- biodiversity
- and – What are our competitors doing? (keep them in sight)..

19

Australian Wine Industry State of the Environment 2003

F. Demonstrate credentials - Illustrate the sector's environmental credentials through effective communication of the sector's programs and performance..



An initiative of the
South Australian Wine Industry Association
and the Winemakers' Federation of Australia
in partnership with the Australian Government,
Department of the Environment and Heritage



20

Industry Responses

Policies

- Entwine -Australia
- Standardised WI Carbon Calculator
 - Preparation for CPRS
 - Emission reduction
- International presence OIV, FIVs..
- Planning for Change – directed R&D
- Watching briefs on GMO's, Organics, CPRS & agriculture, ...



21



22

entwine
australia

23